

# Ikegami

Base Station BS-98



Camera Control Unit CCU-980



Base Station

Camera Control Unit

## BS-98/CCU-980 Hybrid 2K/4K

The BS-98 and CCU-980 are new rack-mountable fiber transmission units for UnicamHD series cameras. High quality 4K ultra HD and 3G/HD-SDI output are supplied simultaneously when connected with a UnicamHD camera, such as an HDK-97C or HDK-95C (with FA97). The CCU-980 is a full rack size camera control unit and the BS-98 is a half rack size base station. The CCU-980 can be fitted with a triax board set, allowing simple switching between SMPTE fiber and triax.

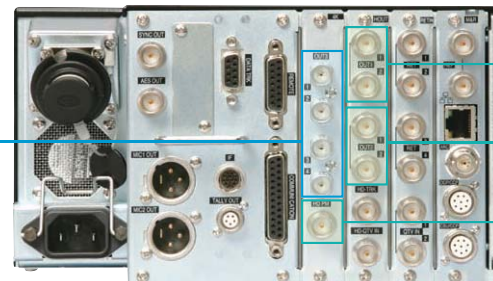


### Unique Features

#### ▶ Simultaneous 4K Ultra HD and HD Live output

Thanks to newly developed Super Resolution technology, the BS-98/CCU-980 can supply high quality 4K Ultra HD and HD signals simultaneously.

Note : 4K (3840 × 2160) output : 3G/HD-SDI × 4 (Square Division)



#### ▶ Applicable to Unicam HD series cameras

The BS-98/CCU-980 can interface with current Unicam HD cameras available today, so that you may still use your existing HD cameras and accessories, including lenses, when you need 4K, as well as HD signal outputs.

#### ▶ Return / QTV signals

The BS-98/CCU-980 accept 4 channels of return video either 3G or HD-SDI. Two analog composite and one HD-SDI prompter and talent monitor (QTV) signals are available as standard features.

#### ▶ Supports both Arcnet and Ethernet capability

The BS-98/CCU-980 support not only Ikegami's conventional one-by-one ICCP control or Arcnet based network control systems, but also an Ethernet based control system, allowing customers to choose the camera control system based on their needs.

#### ▶ High band 3G transmission

The system utilizes high band 3G video transmission in both directions between camera and BS-98/CCU-980. It supports various frame rates such as 1080/59.94p, 50p, 29.97p, 25p and 23.98p.

**While you are NOT really sure how soon 4K video content will take over from HD, The BS-98/CCU-980 are...**

#### Ideal bridge products

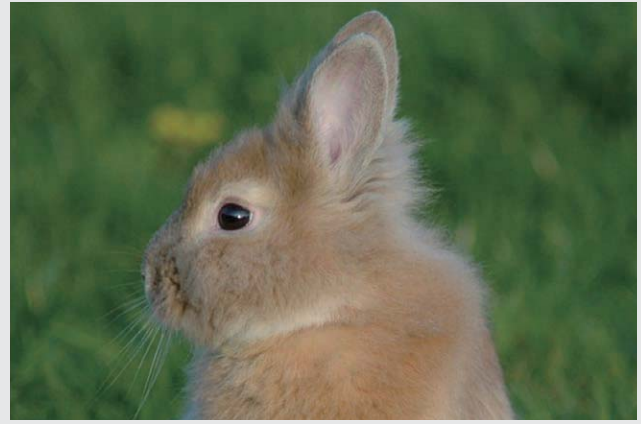
Most economical and realistic 4K solution today!

#### Super Resolution process!

What does 4K live picture produced by Super Resolution look like? How different from conventional upscaling? Here are 4K pictures to compare!



Conventional upscaling



Super Resolution Technology

The BS-98/CCU-980 have a built-in 4K SR CONV video processor to provide a high quality 4K (3840 × 2160) live output. It is not just upscaling from HD signal. It includes so called Super Resolution with image enhancement in the Ultra HD band, a new technology to reconstruct high resolution signals that is not possible in conventional HD processing !

#### Basic Specifications (with 4K video processor)

		BS-98	CCU-980	
Input Signals	External reference input	GENLOCK : Tri-level sync or BBS 75 ohm BNC × 2 (Loop Through) (HDTV/SDTV automatic detection) SUB REF : 10 Field ID 75 ohm BNC × 2 (Loop Through)		
	Return video input	75 ohm 3G/HD/SD-SDI Single End 4ch or 2ch Active-Through (Menu Selection)		
	Q-TV (prompter) input	HD-QTV : HD-SDI 75 ohm single end 1ch (require 3G bandwidth fiber adaptor) SDTV : VBS 75 ohm single end 2ch		
Output Signals	Line video output	4K : 3G/HD-SDI	Serial Digital 75 ohm BNC 4ch 1 output each (OUT3) Quad link (3840 × 2160 Progressive Square Division)	
		2K : 3G/HD-SDI	Serial Digital 75 ohm BNC 2ch 4 outputs (OUT1/OUT2) SMPTE 425M, SMPTE 372M, SMPTE292M standard * 3G-SDI format supports Dual-Link outputs (Menu Selection)	
	Monitor video output	2K : 3G/HD-SDI	Serial Digital 75 ohm BNC 1ch 1 output (HD PM) *SMPTE 425M, SMPTE292M standard	
	Trunk video output		HD-TRUNK : HD-SDI 75 ohm single end 1ch (require 3G bandwidth fiber adaptor)	
Control	Arcnet		BNC × 1ch	
	Ethernet		RJ-45 × 1ch	
	ICCP		OCP / CSU × 2	
General	Operating Voltage		AC100 / 110 / 117 / 220 / 240V±10%	
	Power Consumption		Approx. 80VA (BS only) Power for camera head : less than 155VA	Approx. 110VA (CCU only) Power for camera head : less than 400VA
	Dimensions		W218.6 × H125 × D457 mm (W8.63 × H4.92 × D18.00 inches) (excluding protrusions)	W483 × H133 × D454 mm (W19.00 × H5.25 × D17.88 inches) (excluding protrusions)
	Weight		Approx. 9kg (20 lbs)	Approx. 28kg (62 lbs)

Design and specifications are subject to change without notice.

U317A153-OM

**Ikegami** IKEGAMI ELECTRONICS (U.S.A.), INC.

■ URL <http://www.ikegami.com>

HEADQUARTERS 37 BROOK AVENUE, MAYWOOD, NJ 07607  
Phone:(201) 368-9171 Fax:(201) 569-1626