

Bayerischer Rundfunk

Produktions- und Technikdirektion
Ulrich Glampe
Leitung Studioproduktion FS
Floriansmühlstr. 60
80939 München
Germany

Tel: +49 89 3806 5606



Bayerischer Rundfunk FM1 HD



ARD



ARD



Vision Mixer and Monitor Wall



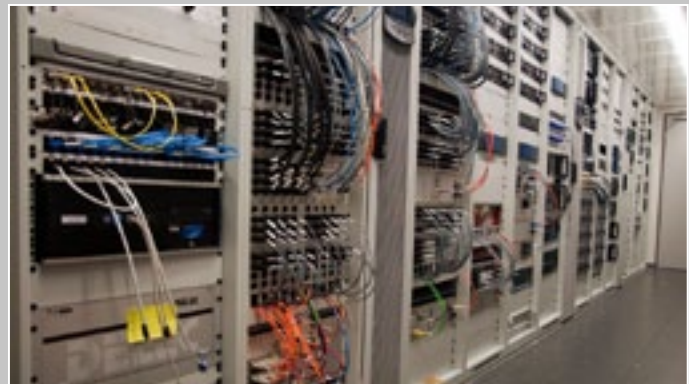
Production Gallery



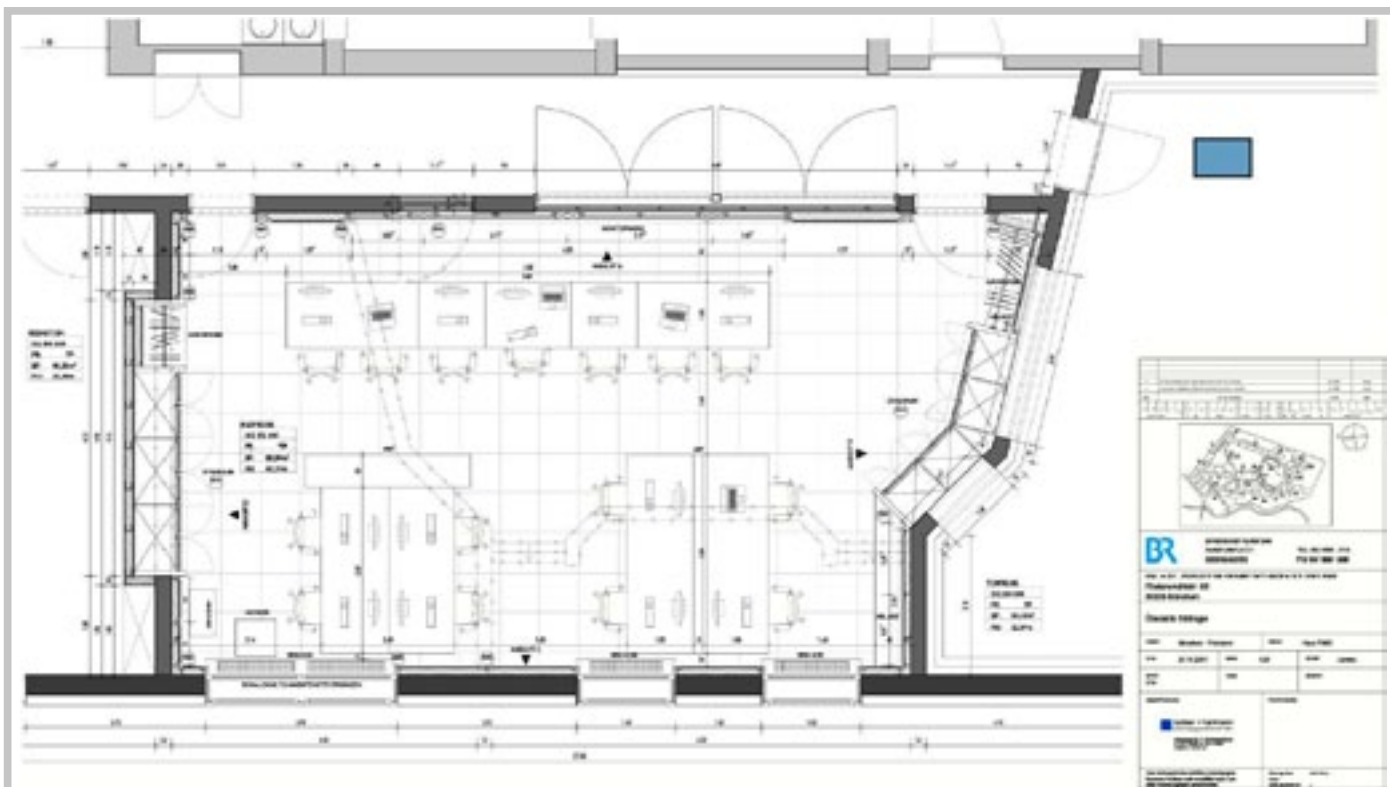
Audio Gallery



Camera Shading



Equipment Room



Floor Plan FM1 HD

TECHNICAL SYNOPSIS Bayerischer Rundfunk

Studio Floor

- Size: 468 m²
- Length: 26m
- Width: 18m
- Height: 7,25m

Lighting in the Studio

- Lighting Equipment from Strand
- Moving Lights from Vari-Lite
- Dimmer Capacity: 280 circuits with 1kW and 2kW
- Lighting Console grandMA2

PA in the Studio

- Yamaha, Soundcraft, div.
- PA Monitors: Neumann ProX6 and d&b Max

Video Gallery

- Vision Mixer Sony MVS-7000
- Character Generator Chyron HyperX 3.1
- Monitor Wall in Production: 5x VTS 55" and 10x VTS 40"
- Monitors for Camera Shading: 2x VTS 24" and 1x VTS 40"
- Multi-Viewer from Evertz, VIP X
- Disk Recorders: Omneon, Grass Valley iDDR T2, GeeVee
- Digital Glue from Lynx

- Video Router: Evertz EQX 144 x 144
- Video Controller: BFE Pilot
- Measurement Equipment from Tektronix

Audio Gallery

- Audio Mixer Stagetec Aurus
- Audio Matrix: Stagetec Nexus 1310 x 1500
- Audio Monitoring: Neumann
- Microphones from Sennheiser, Neumann and Shure
- Multi-Track Recorders are Sadie and Drenkelfort EventDriver
- Audio Effects: Lexicon PCM 70, PCM 96, PCM 91
- Audio Measurement Equipment from RTW: TM9 er

Intercom

- Riedel Artist 128 x 128 Matrix
- Talkbacks are SR 2050 from Sennheiser
- RX/TX Radios are GP 640 from Motorola

Special Features

- 2x coolux Pandoras Box
- 2x Panasonic Beamer

System Integration

- VTS / sono Studiotechnik